



# Location, Location

twinkl

# Aim

- I can use geographical terminology to describe the location of a range of places across the Americas.

## Success Criteria

- I can explain the meaning of key vocabulary relating to geographical location.
- I can explain how latitude affects the physical features of a geographical region.
- I can use maps and atlases to locate countries and regions of the Americas.
- I can tell you the geographical location and key characteristics of different places across the Americas.

# What Do You Think It Looks Like?



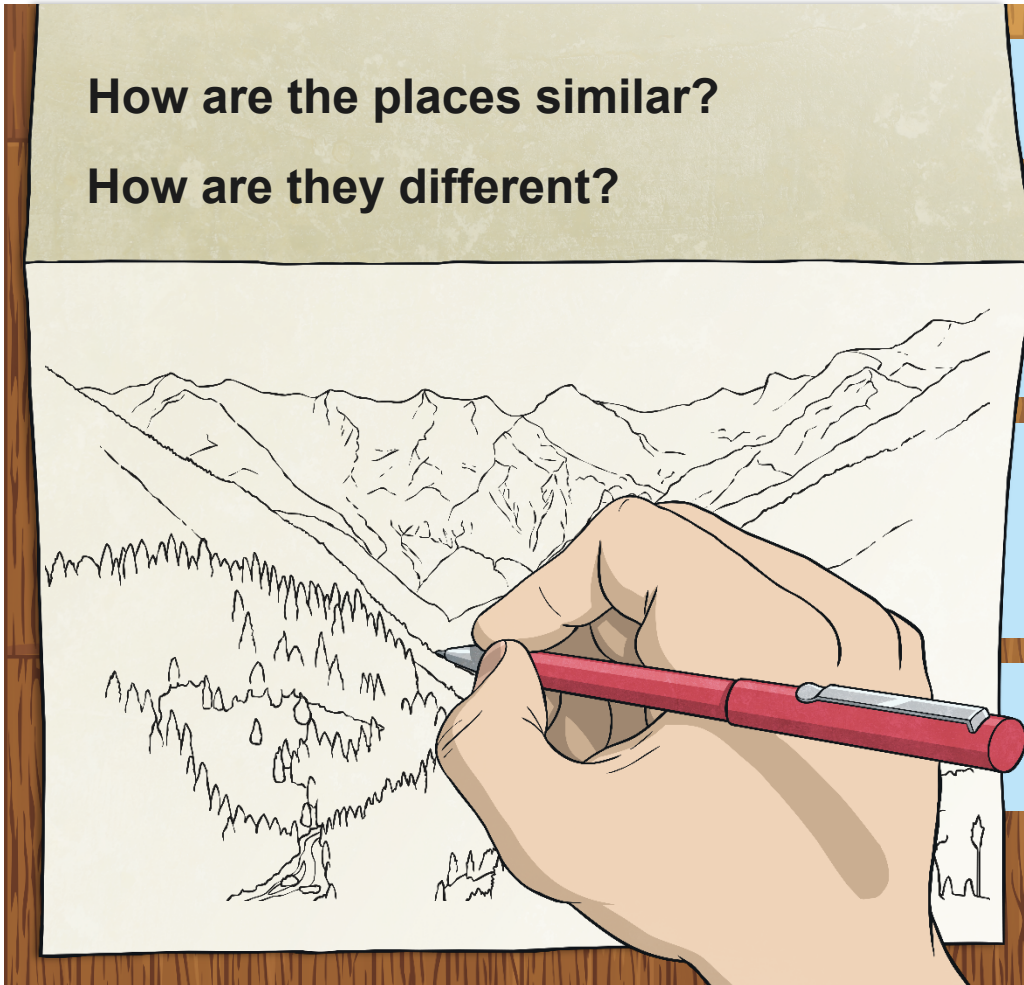
**How are the places similar?**

**How are they different?**

Divide your paper into two.

On one half, draw or write about a place in North America.

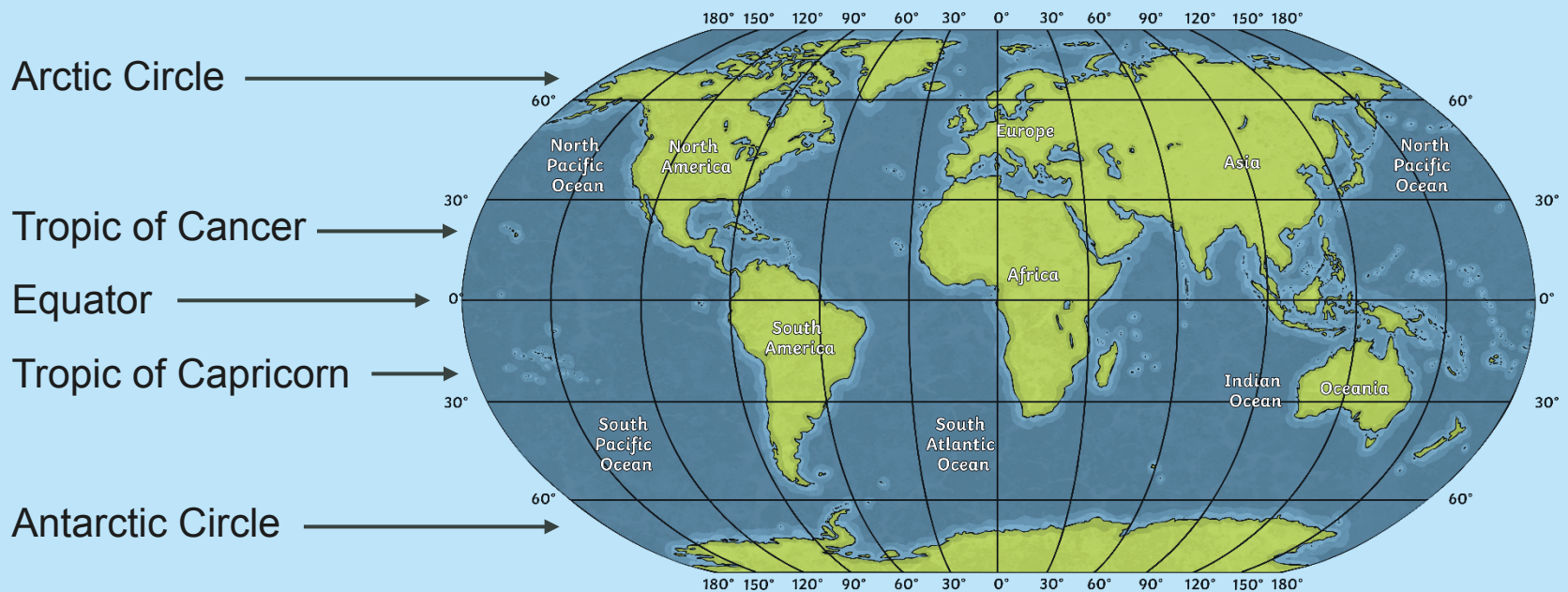
On the other half, draw or write about a place in South America.



# Latitude and Longitude



This world map shows the lines of latitude and longitude.  
What do the lines of latitude and longitude tell us?

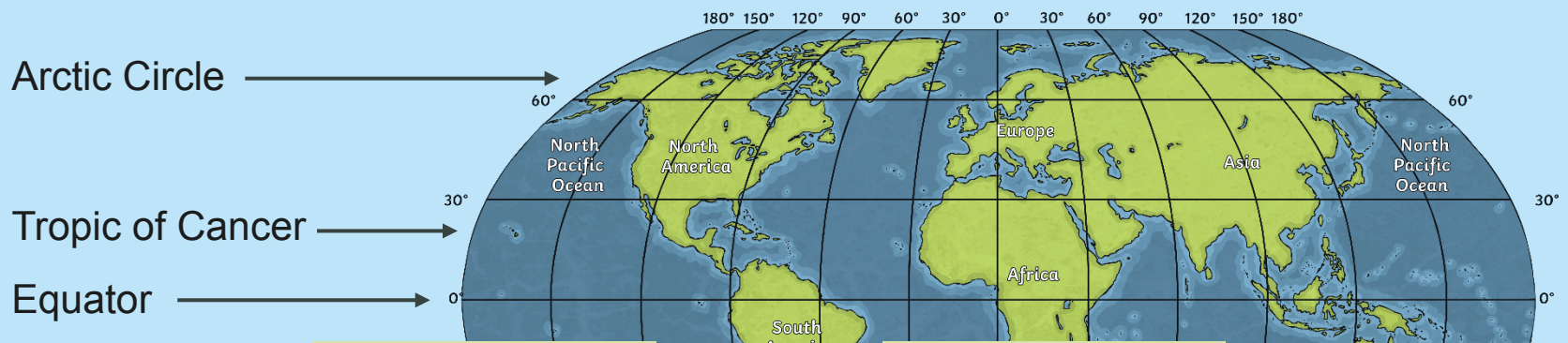


Will the places in each land mass look the same? Why/Why not?

# Climate Zones

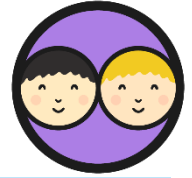


What do you know about these areas?  
Click each of the areas to find out more.

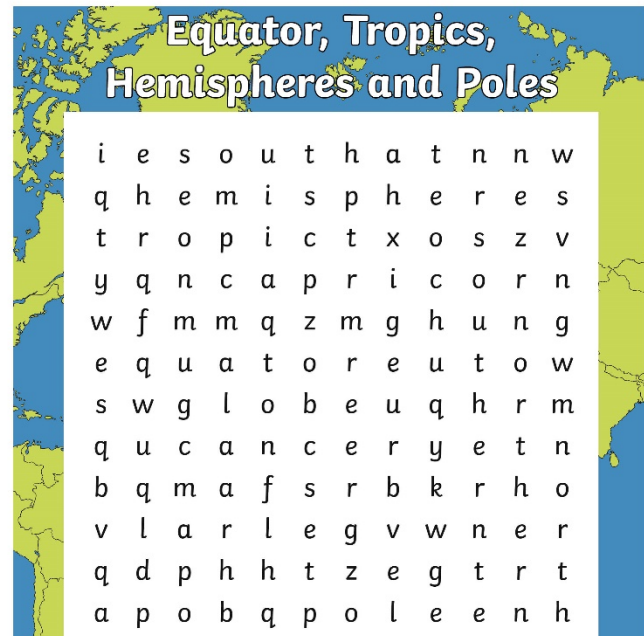


Close		Close		Close		Close		Close	
Antarctic Circle		Arctic Circle		Equator: An imaginary line around the globe at latitude 0°.		Tropic of Cancer: an imaginary line around the globe at latitude 24° north. The sun is directly above this line at the solstice around 21 <sup>st</sup> June.			
1		2		3		4		5	

# Key Vocabulary



Complete the **Word Search Activity Sheet**. Then write a definition of each of the key words found.



# Equator, Tropics, Hemispheres and Poles

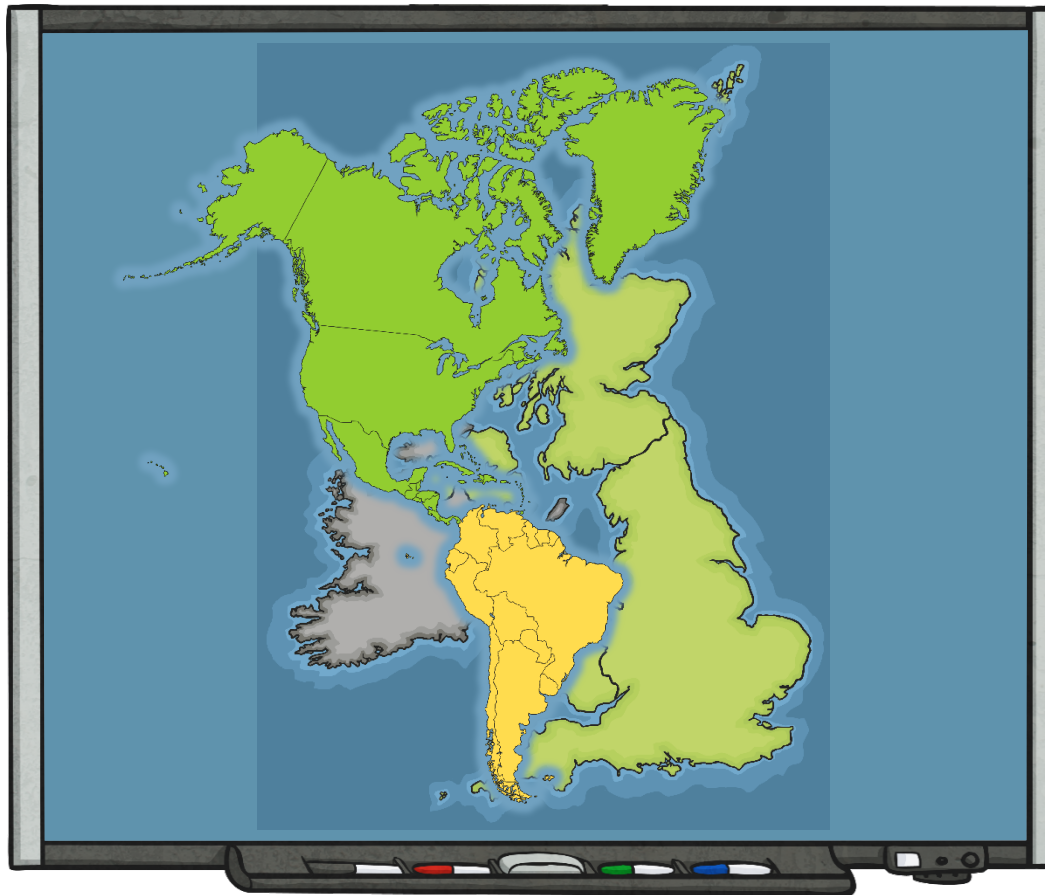
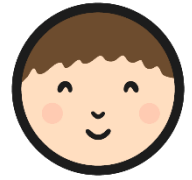
i e s o u t h a t n n w  
q h e m i s p h e r e s  
t r o p i c t x o s z v  
y q n c a p r i c o r n  
w f m m q z m g h u n g  
e q u a t o r e u t o w  
s w g l o b e u q h r m  
q u c a n c e r y e t n  
b q m a f s r b k r h o  
v l a r l e g v w n e r  
q d p h h t z e g t r t  
a p o b q p o l e e n h

map  
globe  
southern  
northern

hemisphere  
equator  
tropic  
Cancer

Capricorn  
north  
south  
pole

# Geographical Locations and Characteristics



Unlike the United Kingdom, the Americas cover a huge area of the globe, extending over several lines of latitude and longitude. This means that the characteristics of different countries and regions vary significantly. These will include temperature, rainfall, vegetation and land use.

# Making Comparisons



How are they similar?

How are the places  
you have studied  
different to the UK?

Where would you  
prefer to live?



## Geographical Locations and Characteristics

I can describe the geographical location and characteristics of different places in the Americas.



1. Use atlases, information books and the Internet to explain the geographical location of the following places in the Americas:

Place Name	Anchorage, Alaska	Rio de Janeiro
State and/or country		
Capital city		
Coordinates (latitude and longitude)		
Hemisphere		
Size (area, etc.)		
Natural (physical) features		
Time zone		
Typical weather (rainfall, summer and winter temperature, etc.)		

2. Find and describe other places in the world that share similar physical features with each of your chosen locations in the Americas. Explain why this might be the case.



## Geographical Locations and Characteristics **Answers**

Question	Answer		
1.	Use atlases, information books and the Internet to explain the geographical location of the following places in the Americas:		
	Place Name	Anchorage, Alaska	Rio de Janeiro
	State and/or country	Alaska, USA	Brazil
	Capital city	none	none
	Coordinates (latitude and longitude)	61° N, 149° W	22° S, 43° W
	Hemisphere	Northern	Southern
	Size (area, etc)	5083 km <sup>2</sup>	1255 km <sup>2</sup>
	Natural (physical) features	Anchorage is on coastal lowland and has natural features such as mudflats and waterfalls.	Rio de Janeiro is on the coast. It also has mountains and forests. The Cabuçu River flows through Rio de Janeiro.
	Time zone	UTC/GMC -9 hours	UTC/GMT -2 hours
	Typical weather (rainfall, summer and winter temperatures, etc)	Anchorage has a subarctic climate. Most of the rainfall occurs in late summer. The average daytime summer temperatures range from 13°C to 26°C. The average daytime winter temperatures range from -15°C to -1.1°C. Temperatures range from above 40°C in summer and above 27°C in winter.	Rio de Janeiro has a tropical climate. The average annual rainfall varies from 1200 to 2800mm. It has hot, humid summers and wet winters.

# Aim



- I can use geographical terminology to describe the location of a range of places across the Americas.

## Success Criteria

- I can explain the meaning of key vocabulary relating to geographical location.
- I can explain how latitude affects the physical features of a geographical region.
- I can use maps and atlases to locate countries and regions of the Americas.
- I can tell you the geographical location and key characteristics of different places across the Americas.



twinkl